



## REAL-TIME DETECTION OF ADVANCED THREATS

Based on a next-generation technology, Trackwatch<sup>®</sup> Full Edition detection system, published by Gatewatcher, efficiently protects organisations against intrusions and breaches.



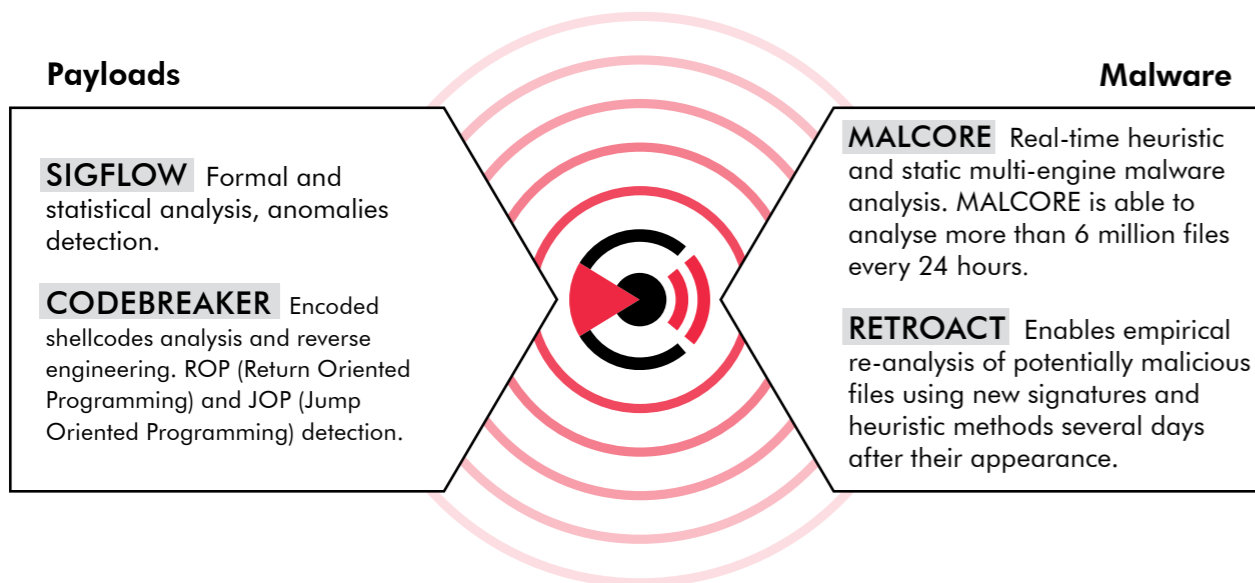
**Trackwatch® Full Edition is the first advanced threats detection system qualified by the French National Cybersecurity Agency (ANSSI).**



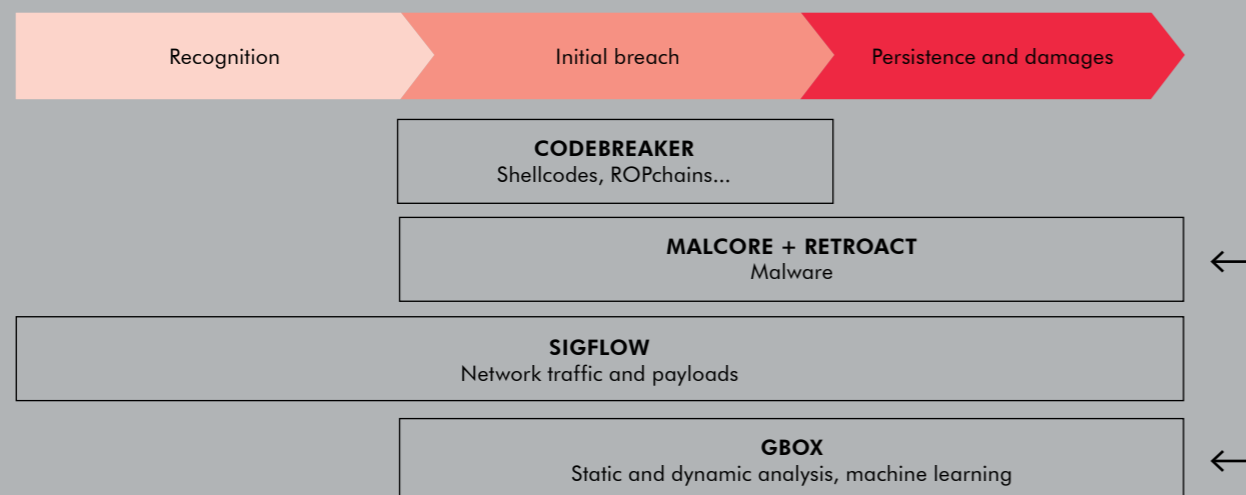
The solution detects abnormal behaviour and weak signals within network flows. Trackwatch® is composed of one or several detection probes (GCAP) and a management appliance (GCENTER).

## TRACKWATCH® DETECTION ENGINES

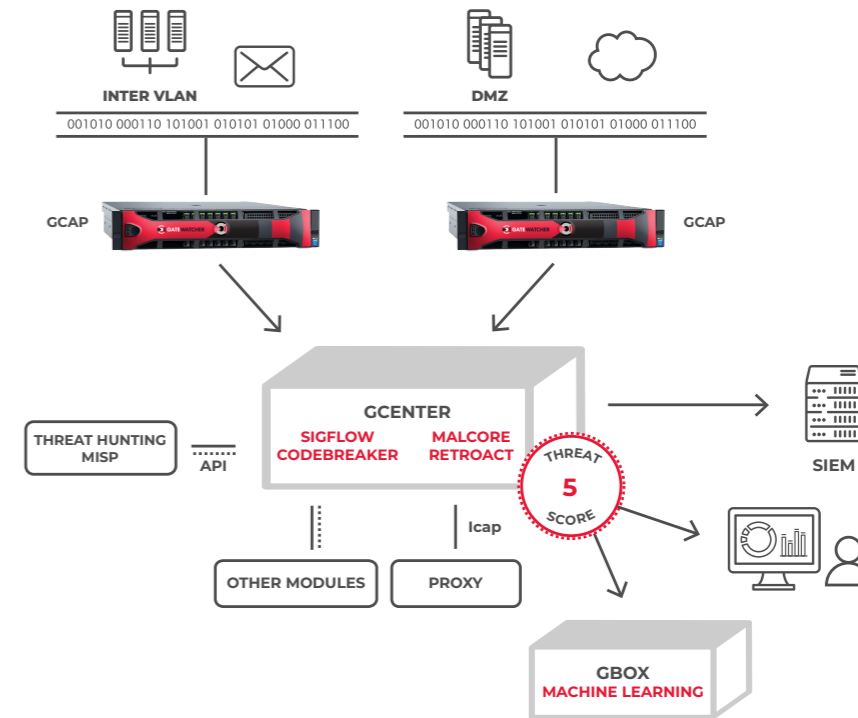
- Unrivalled breach detection thanks to its **dual approach to the threat** in the exploration phase.
- **4 next-generation engines.**



## TIMELINE OF AN APT DETECTED BY TRACKWATCH®



TRACKWATCH® IS BASED ON UNIQUE TECHNOLOGIES IN WEAK SIGNALS ANALYSIS AND MACHINE LEARNING



## DETECT WITH TRACKWATCH®

- « Network Behaviour » approach
- Daily updates of Threat Intelligence
- Decrease in false positives and recurring alerts
- Management of alert severity / criticality
- Easy to install and configure
- Connects with TAP or port mirroring

## ANALYSE WITH GBOX

- Advanced analysis by machine learning
- In-depth analysis of threats and malware: how they work, where they come from.
- Can be used on its own or with the GCENTER
- Static analysis and multi anti-virus
- Dynamic analysis and anti-bypass techniques.

### Trackwatch® CIE

Detection features for critical environments.

- 1 SIGFLOW
- 2 MALCORE (1 engine)
- 3 RETROACT

### GBOX

Threats and malware analysis.

- 1 32 ENGINES
- 2 SANDBOX
- 3 MACHINE LEARNING

### Trackwatch® Full Edition

Optimal detection features for critical environments.

- 1 SIGFLOW
- 2 CODEBREAKER
- 3 MALCORE (16 engines)
- 4 RETROACT

### Gatewatcher Foundation

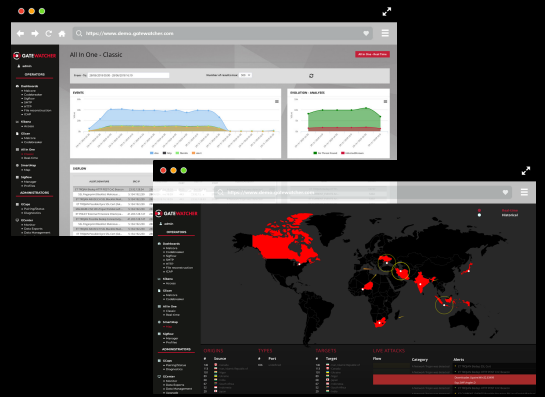
Hardened and flexible OS.

- 1 Random memory encryption (GRSEC)
- 2 Secured boot
- 3 Dockerisation

Cyberattacks are getting more and more complex and targeted, causing important damages to various types of private and public organisations. They use discreet intrusions into the targeted information system.

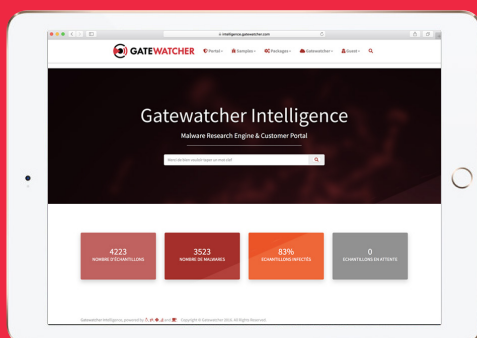
Trackwatch® has been designed to protect various business sectors, such as transportation, telecommunications, hospitals, energy and banks. It allows strategic organisations to address their cybersecurity needs by providing a cutting edge solution for detecting and analysing the most crafted threats.

The breach detection system Trackwatch® Full Edition published by Gatewatcher is qualified by the French National Cybersecurity Agency.



42, rue Washington  
75008 Paris, FRANCE

[www.gatewatcher.com](http://www.gatewatcher.com)



Discover and try our sample analysis platform:  
[intelligence.gatewatcher.com](http://intelligence.gatewatcher.com)